

EIS Staff Data: Business Rules, Funding Source FTEs, and Sample Scenarios

Trish Kelly | Federal Programs & Oversight (FPO) Data Manager

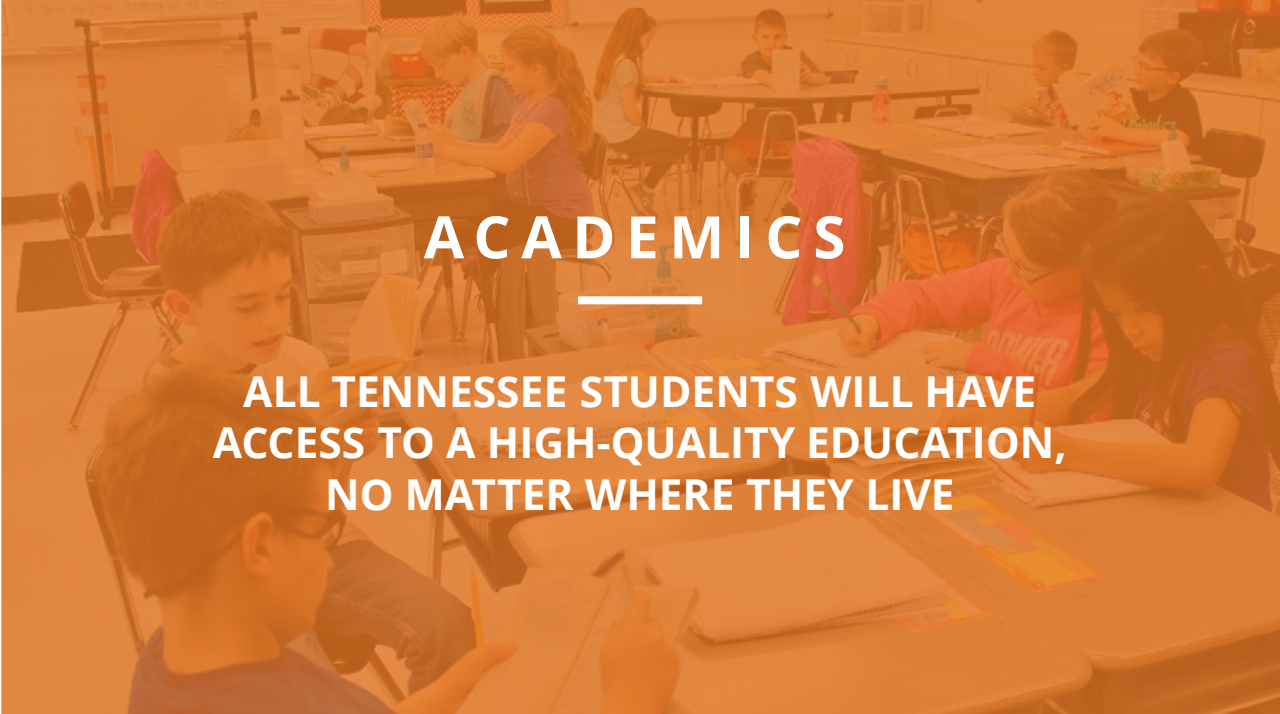
August 2023





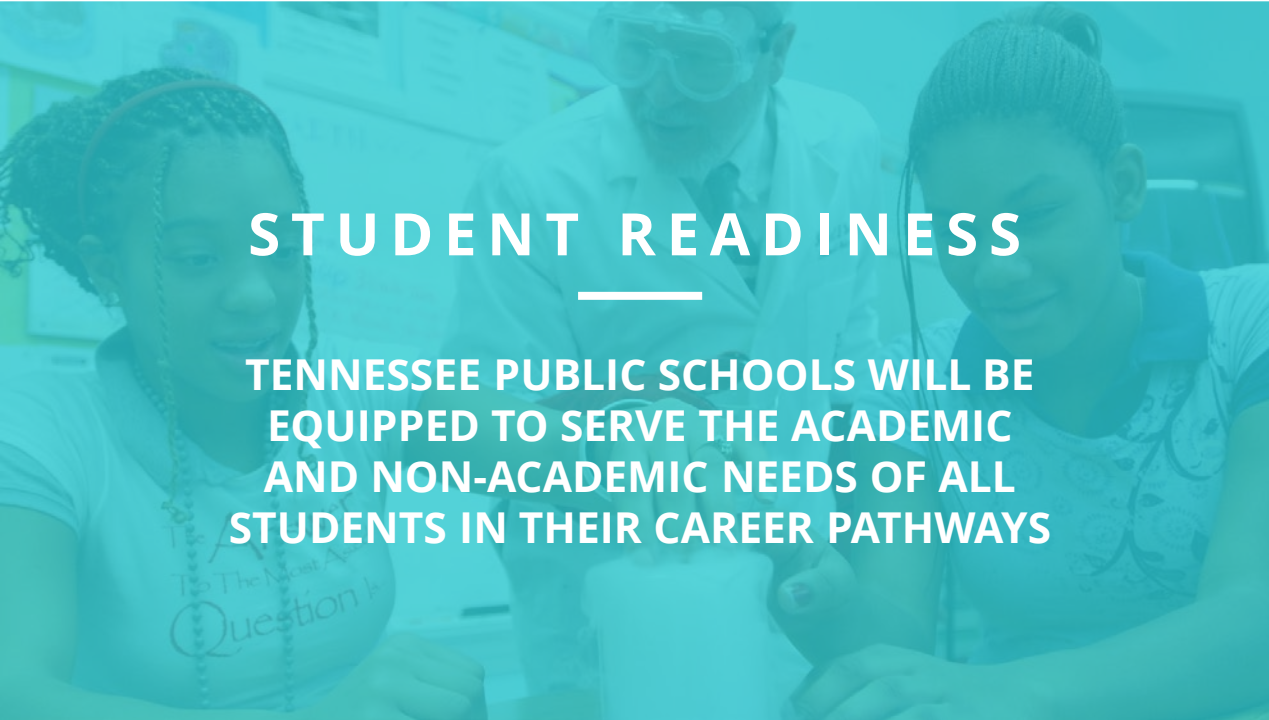
BEST FOR ALL

We will set all students on a path to success.



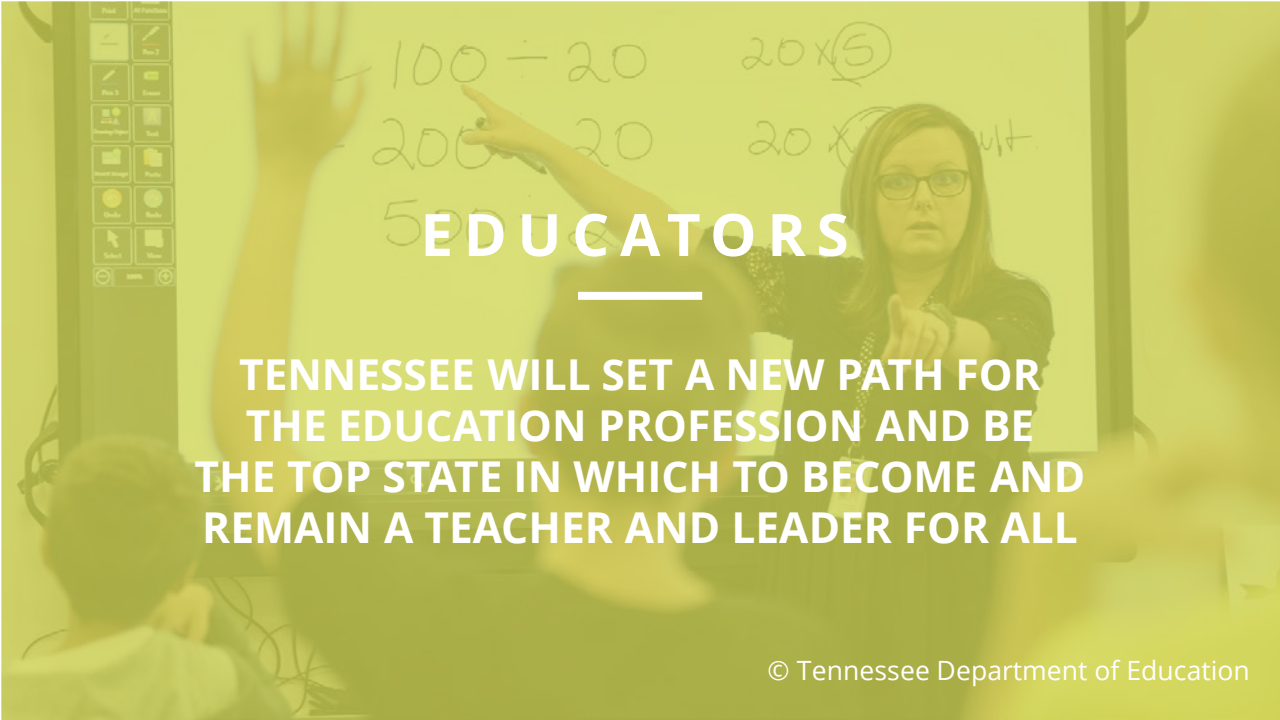
ACADEMICS

ALL TENNESSEE STUDENTS WILL HAVE ACCESS TO A HIGH-QUALITY EDUCATION, NO MATTER WHERE THEY LIVE



STUDENT READINESS

TENNESSEE PUBLIC SCHOOLS WILL BE EQUIPPED TO SERVE THE ACADEMIC AND NON-ACADEMIC NEEDS OF ALL STUDENTS IN THEIR CAREER PATHWAYS



EDUCATORS

TENNESSEE WILL SET A NEW PATH FOR THE EDUCATION PROFESSION AND BE THE TOP STATE IN WHICH TO BECOME AND REMAIN A TEACHER AND LEADER FOR ALL



Agenda

- EIS Staff Data Business Rules
- Staff Current Assignments Research Query
- Staff Assignment and Funding Source FTE Sample Scenarios
- Resources
- Contact Information



EIS Staff Data Business Rules



Staff Assignments are Tied to School Years

- Staff assignments and funding source full-time equivalents (FTEs) are year-specific.
- Enter assignments and funding source FTEs each school year.





Staff Assignment Begin Date

- Enter staff assignment begin dates each year to identify staff with assignments for the year.
 - For example, enter the first day of the 2023-24 school year (e.g., 8/3/2023).





Staff Assignment End Dates

- Enter assignment end dates for staff who do not complete the year.
 - For example, enter 9/15/2023 for a staff member whose assignment ends on Sept. 15, 2023.
 - Entering end dates ensures that assignment data are accurate.



Staff Assignment End Dates

- For staff who complete the year, an end date may be used or it may be omitted.
 - For example, at the end of the 2023-24 school year, enter the last day of the assignment (e.g., 5/28/2024).
 - Or use a blank value to indicate that the staff member completed the year.
 - Check with your SIS vendor on the best approach for your SIS package.





Assignments and Funding Source FTEs

- LEAs submit one record in SIS/EIS per year, staff member, school, and assignment.
- Each staff assignment record includes three funding source fields that are reported in full-time equivalents (FTEs):
 - federal funding source,
 - state/local funding source, and
 - other funding source.





Funding Source FTEs Range between 0 and 1

- Funding source FTEs are expected to range between 0 and 1.
 - 1 indicates that the assignment is full-time and entirely funded by one funding source.
 - 0 indicates that the funding source did not support the assignment.
 - Values between 0 and 1 are used to report funding for assignments that are less than full-time or funded by multiple sources.
 - Funding source FTEs summed across all assignments total 1 for licensed, full-time, school-based staff members and less than 1 for part-time staff members.





Null Values and Decimal Places

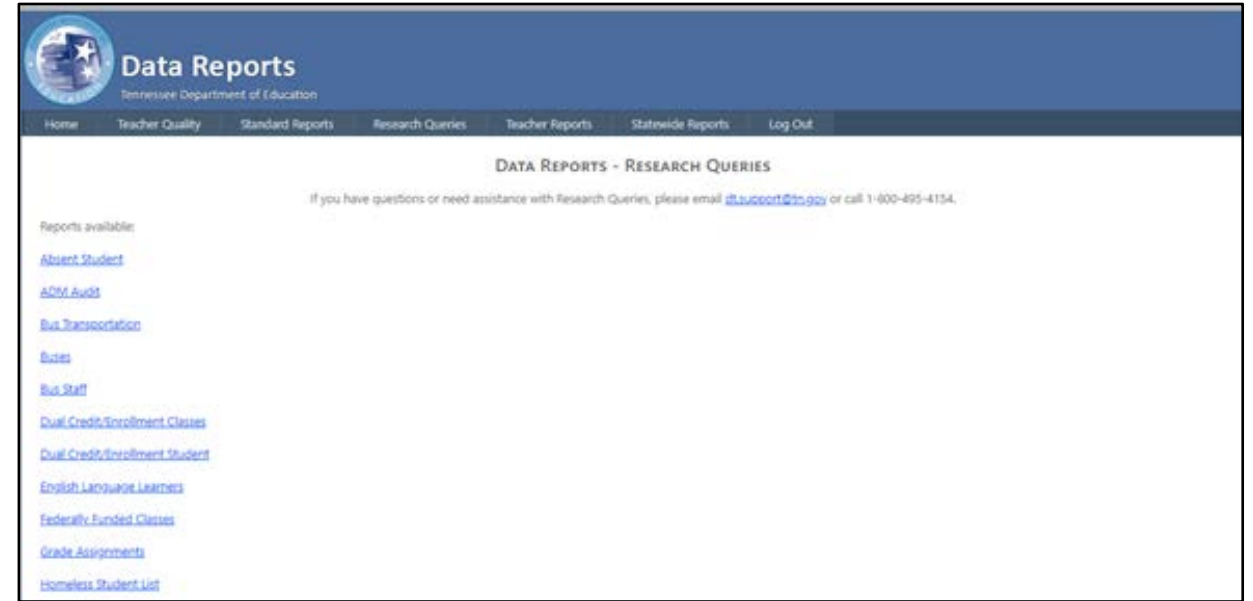
- For funding source FTES, EIS will accept null values and **zero to three decimal places**.
 - Using 0 as an example, accepted values are 0, 0.0, 0.00, and 0.000.
 - Using .5 as an example, accepted values are 0.5, 0.50, and 0.500.
 - Using 1 as an example, accepted values are 1, 1.0, 1.00, and 1.000.



Staff Current Assignments Research Query

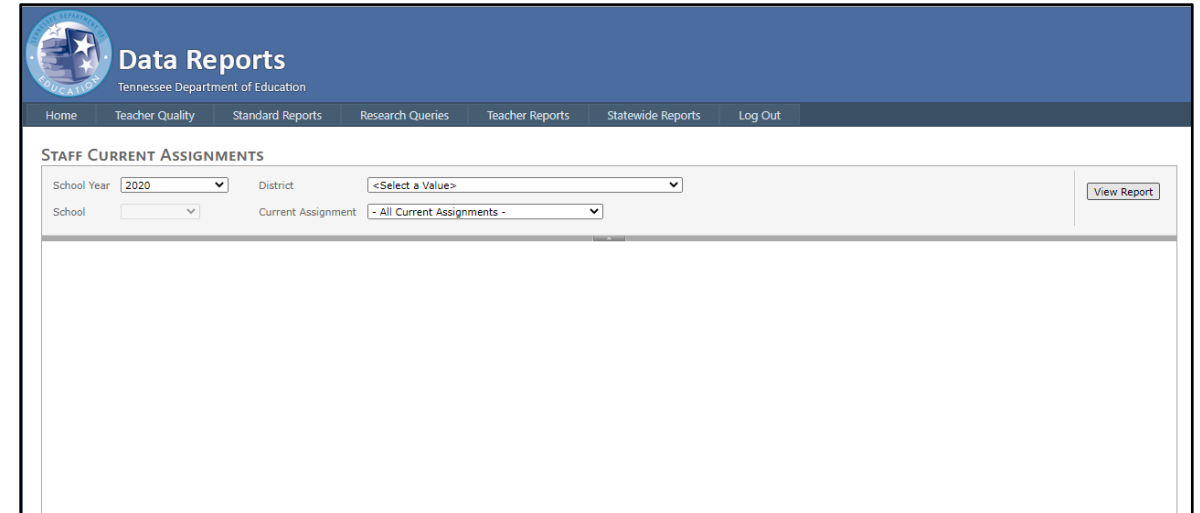
Staff Current Assignments Research Query

- To check your data in EIS, log in as a district or school user.
- Select ***Data Reports / Research Queries***.
- From the research query list, select the ***Staff Current Assignments***.



Staff Current Assignments Research Query

- Select Year and enter **2023** for the **2023-24** school year.
- Select a **School** or **All Schools**.
- Select a specific assignment code or select **All Current Assignments**.
- To run the report, select **View Report**.
- To download to an Excel or csv file, select the file icon to the right of Find | Next.



The screenshot shows the 'Data Reports' interface for the Tennessee Department of Education. The page title is 'Data Reports' with the department's logo. A navigation bar includes links for Home, Teacher Quality, Standard Reports, Research Queries, Teacher Reports, Statewide Reports, and Log Out. The main content area is titled 'STAFF CURRENT ASSIGNMENTS' and features a search form with the following fields: School Year (set to 2020), District (set to '<Select a Value>'), School (empty), and Current Assignment (set to '- All Current Assignments -'). A 'View Report' button is located to the right of the form. Below the form is a large empty white space.

Staff Current Assignments Research Query Results

- School and staff identifiers are on the left.
- Staff current assignments, assignment begin and end dates, three funding source FTEs (federal, state/local, and other), and email address are on the right.
- Sort the data by school, name, and assignment code.
- The data will include all staff with assignments entered in SIS and uploaded to EIS.



Staff Assignment and Funding Source FTE Sample Scenarios

One Full-Time Assignment and One Funding Source

One Full-Time Assignment and One Funding Source											
LEAID	LEA	SCHID	School	Lic No	First Name	Last Name	Staff Current Assignment Code	Staff Current Assignment	Federal Funding Source FTE	State/Local Funding Source FTE	Other Funding Source FTE
1	LEA 1	5	School 5	1	Zebra	Apple	G1	Grade 1 Teacher	0	1	0
1	LEA 1	5	School 5	2	Rhino	Peach	ESL	ESL Teacher	0	1	0
1	LEA 1	5	School 5	3	Cat	Kiwi	7C	Special Education Teacher	1	0	0
1	LEA 1	5	School 5	4	Dog	Banana	IC	Instructional Coach	1	0	0
1	LEA 1	5	School 5	5	Hamster	Cherry	SW	Social Worker	0	0	1

One Full-Time Assignment and Two Funding Sources

One Full-Time Assignment and Two Funding Sources

LEAID	LEA	SCHID	School	Lic No	First Name	Last Name	Staff Current Assignment Code	Staff Current Assignment	Federal Funding Source FTE	State/Local Funding Source FTE	Other Funding Source FTE
1	LEA 1	5	School 5	3	Cat	Kiwi	7C	Special Education Teacher	0.5	0.5	0
1	LEA 1	5	School 5	4	Dog	Banana	IC	Instructional Coach	0.25	0.75	0

Two Half-Time Assignments: Different Subjects

Two Half-Time Assignments: Different Subjects

LEAID	LEA	SCHID	School	Lic No	First Name	Last Name	Staff Current Assignment Code	Staff Current Assignment	Federal Funding Source FTE	State/Local Funding Source FTE	Other Funding Source FTE
1	LEA 1	5	School 5	20	Horse	Ranch	G1	Grade 1 Teacher	0.0	0.5	0
1	LEA 1	5	School 5	20	Horse	Ranch	G2	Grade 2 Teacher	0.0	0.5	0

Three One-Third Assignments: Same Subject

Three One-Third Assignments: Same Subject

LEAID	LEA	SCHID	School	Lic No	First Name	Last Name	Staff Current Assignment Code	Staff Current Assignment	Federal Funding Source FTE	State/Local Funding Source FTE	Other Funding Source FTE
1	LEA 1	5	School 5	30	Rhino	Peach	ESL	ESL Teacher	0.0	0.33	0
1	LEA 1	10	School 10	30	Rhino	Peach	ESL	ESL Teacher	0.0	0.33	0
1	LEA 1	15	School 15	30	Rhino	Peach	ESL	ESL Teacher	0.0	0.33	0

Three Part-Time Assignments: Not Full-Time

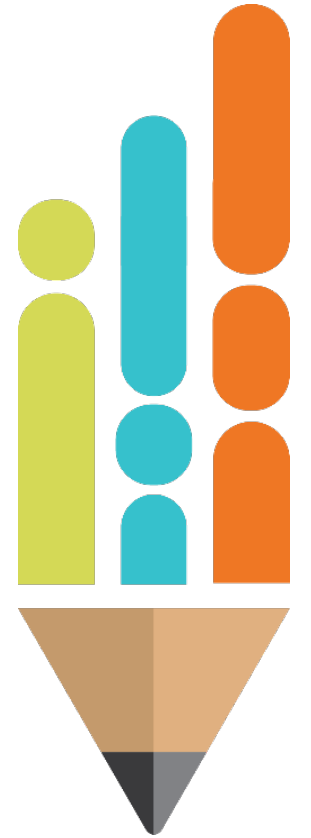
Three Part-Time Assignments: Not Full-Time

LEAID	LEA	SCHID	School	Lic No	First Name	Last Name	Staff Current Assignment Code	Staff Current Assignment	Federal Funding Source FTE	State/Local Funding Source FTE	Other Funding Source FTE
1	LEA 1	20	School 20	100	Bear	Berry	HB	Grade 9-12 Math Teacher	0.0	0.40	0
1	LEA 1	30	School 30	100	Bear	Berry	HB	Grade 9-12 Math Teacher	0.0	0.25	0
1	LEA 1	40	School 40	100	Bear	Berry	HB	Grade 9-12 Math Teacher	0.0	0.15	0

Resources and Contact Information

Additional Resources

- For additional resources, please visit [ePlan](#).
- Select *TDOE Resources* and follow the pathway: Data and Information Tools > Comparability > 2023-24. (A login is not required for the ePlan > *TDOE Resources* folder.)



Contact Information

- If you have questions about **staff data and coding**, please contact **Trish Kelly**, FPO Data Manager at Trish.Kelly@tn.gov.
- For questions about **comparability requirements**, please contact your **assigned divisional coordinator**.
- For **EIS errors and restaging problems**, please contact the **district technology support team** at dt.support@tn.gov.





Thank You!

Permission is granted to use and copy these materials for non-commercial educational purposes with attribution credit to the "Tennessee Department of Education". If you wish to use these materials for reasons other than non-commercial educational purposes, please contact Joanna Collins (Joanna.Collins@tn.gov).

Fraud, Waste or Abuse

Citizens and agencies are encouraged to report fraud, waste, or abuse in State and Local government.

NOTICE: This agency is a recipient of taxpayer funding. If you observe an agency director or employee engaging in any activity which you consider to be illegal, improper or wasteful, please call the state Comptroller's toll-free Hotline:

1-800-232-5454

Notifications can also be submitted electronically at:

<http://www.comptroller.tn.gov/hotline>