



Early Childhood: APR Indicators 6, 7, & 12

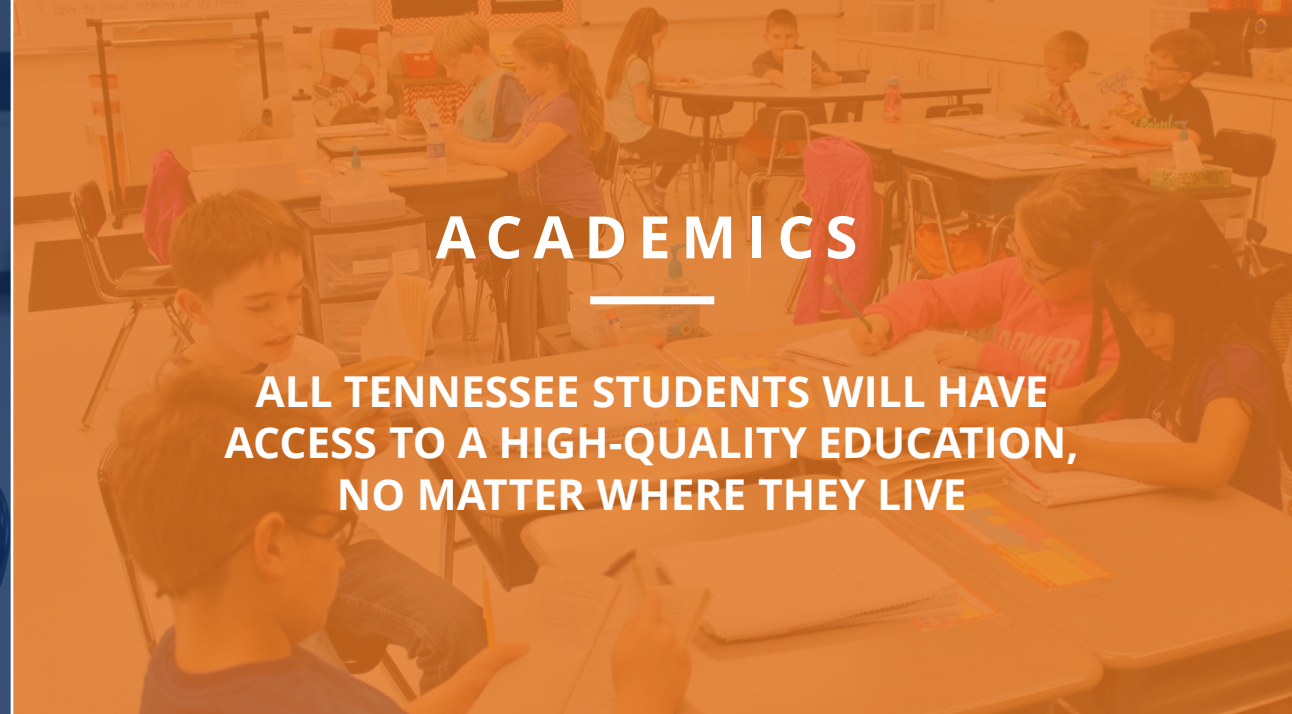
Zac Stone

*Senior Director of Data Reporting, Office of the
Commissioner*



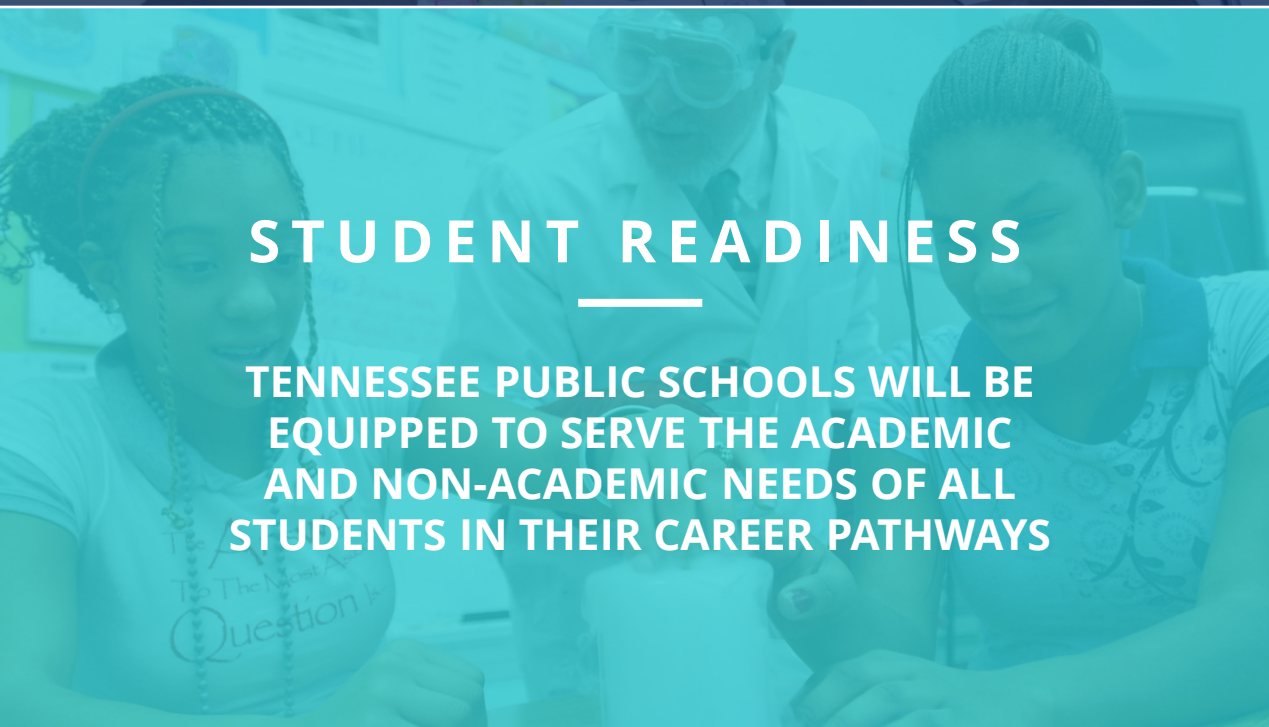
BEST FOR ALL

We will set all students on a path to success.



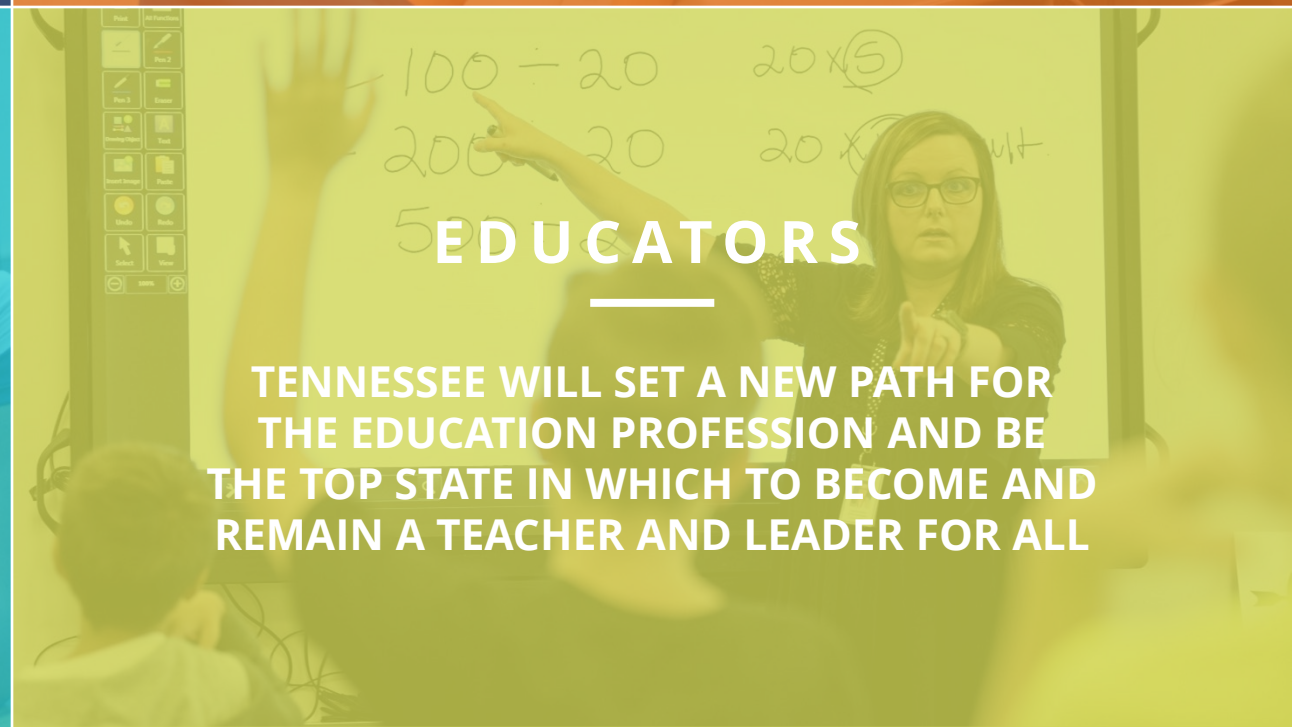
ACADEMICS

ALL TENNESSEE STUDENTS WILL HAVE ACCESS TO A HIGH-QUALITY EDUCATION, NO MATTER WHERE THEY LIVE



STUDENT READINESS

TENNESSEE PUBLIC SCHOOLS WILL BE EQUIPPED TO SERVE THE ACADEMIC AND NON-ACADEMIC NEEDS OF ALL STUDENTS IN THEIR CAREER PATHWAYS



EDUCATORS

TENNESSEE WILL SET A NEW PATH FOR THE EDUCATION PROFESSION AND BE THE TOP STATE IN WHICH TO BECOME AND REMAIN A TEACHER AND LEADER FOR ALL

APR Local Determinations Overview

- As required by the Individuals with Disabilities Education Act (IDEA), 34 C.F.R. § 300.600, states must monitor the implementation of IDEA in each LEA.
- Tennessee monitors LEA implementation on 14 indicators.
 - Compliance indicator targets are set by the federal government.
 - Results indicator targets are set by TDOE.
- LEAs earn points for each indicator based on meeting the target and/or demonstrating year-to-year improvement.
- Total weighted points earned are divided by total possible weighted points to make the overall determination.





Agenda

Early Childhood:

- Indicator 6: Preschool Educational Environment
- Indicator 7: Early Childhood Outcomes
 - 7A: Social-emotional skills
 - 7B: Knowledge and skills
 - 7C: Appropriate behaviors
- Indicator 12: Part C to B Transition



Indicator 6:

Educational Environment (Ages 3
Through 5 Not in Kindergarten)



Indicator 6A: Educational Environment (Ages 3 Through 5 Not in Kindergarten)

- Definition—Percent of SWDs attending a regular early childhood program and receiving the majority of special education and related services in the regular early childhood program (general education).
- Source—The *FINAL Combined Table 1&3 Dec1 Rpt Details (XLS)* generated in TN PULSE on December 1.
- Calculation—Using the *FINAL Combined Table 1&3 Dec1 Rpt Details (XLS)*:

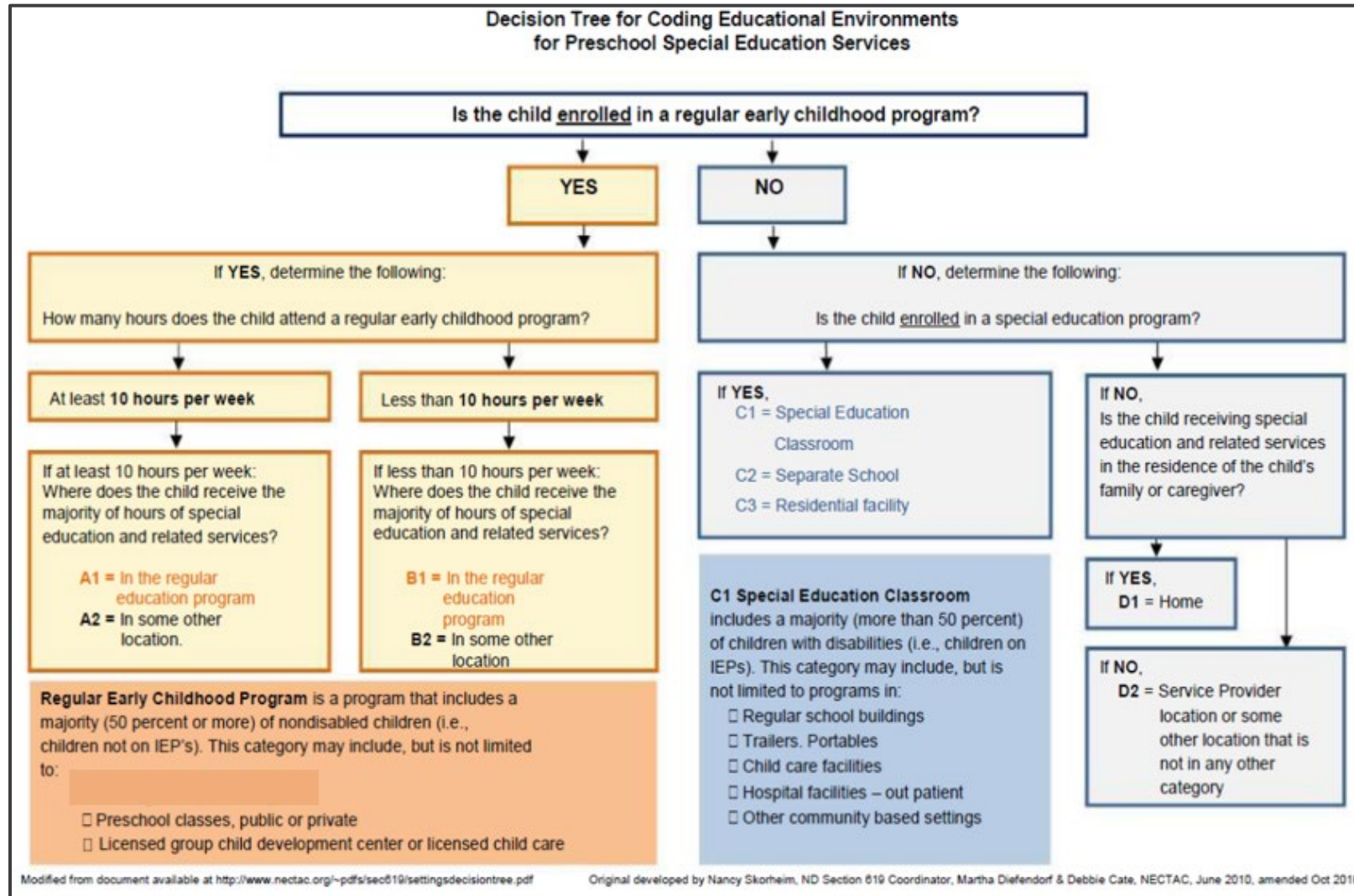
SWDs who are in environment category A1 **OR** B1 (regular early childhood program).



Total number of SWDs ages 3-5 (Not K).

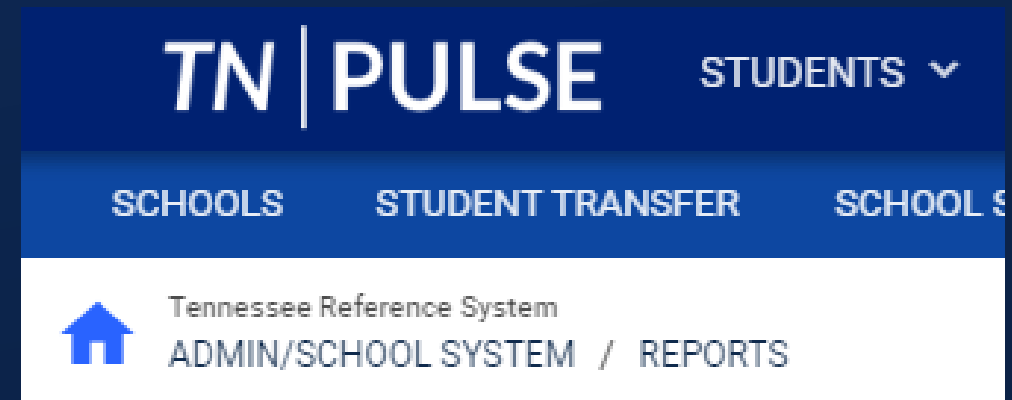


Decision Tree for Coding Educational Environments for Preschool SPED Services



Calculating Indicator 6A for your LEA

- Download the *FINAL Combined Table 1&3 Dec1 Rpt Details (XLS)* for the applicable school year or Request the report titled *Combined Table 1&3 Dec1 Rpt Details (XLS)* in TN PULSE.
- If using the *Combined Table 1&3 Dec1 Rpt Details (XLS)*, you can run this report for any date you want to see.



Calculating Indicator 6A for your LEA

- Percent represents the sum of SWDs in environment categories A1 and B1 (Column F, Rows 129 and 131) divided by total number of SWDs ages 3-5 (Not K) (Column F, Row 138).
- To review a list of individual students and their environment categories, refer to the section of the *FINAL Combined Table 1&3 Dec 1 Rpt Details (XLS)* titled "Students included in report" under "Data Output".

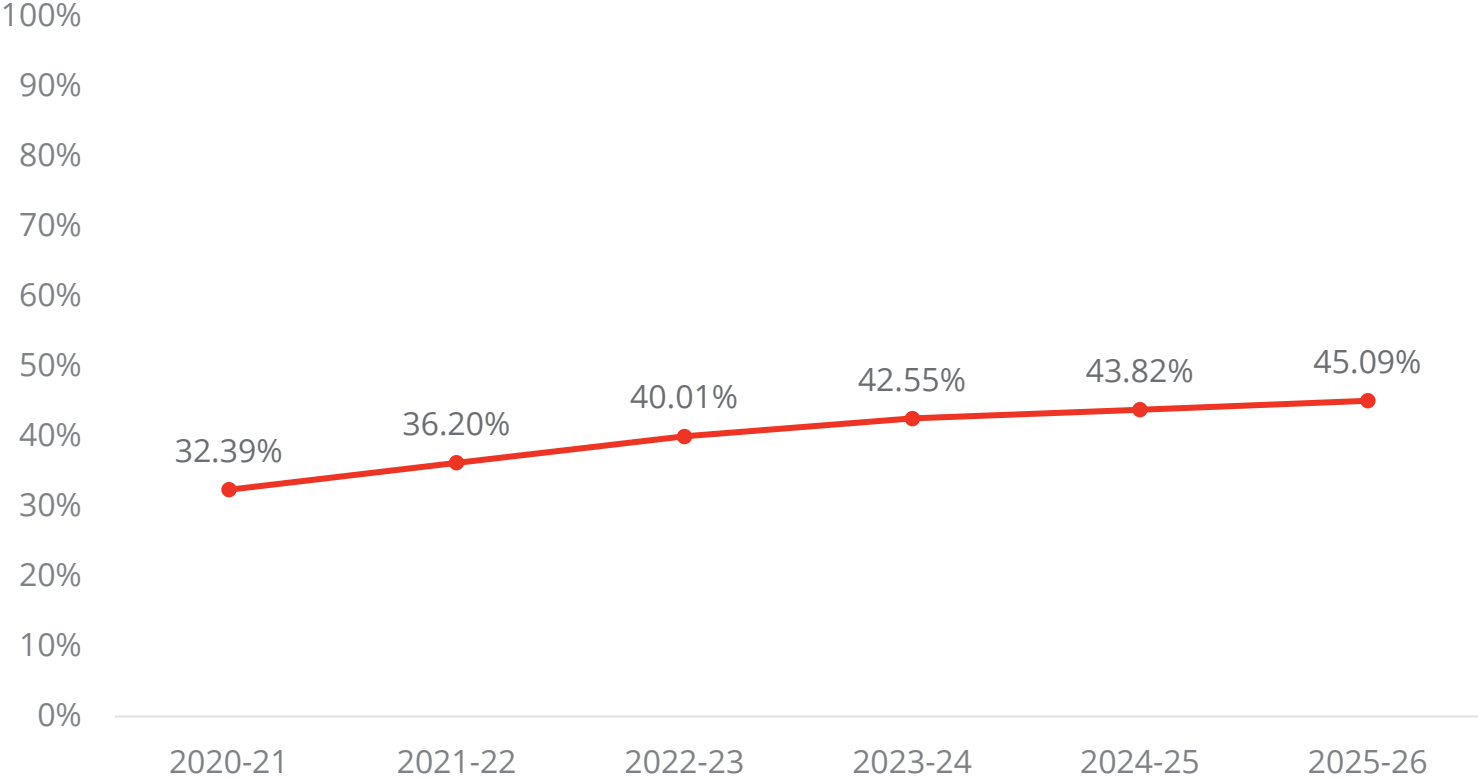
126	Table 3 Section A: ages 3-5 (Not K)				
127		Age			
128	Education	3	4	5 (Not K)	Total
129	(A) CHILDF (A1) ... and	5	6	7	18
130	(A2) ... and	0	1	1	2
131	(B) CHILDF (B1) ... and	2	3	3	8
132	(B2) ... and	0	0	0	0
133	(C) CHILDF (C1) ... spe	4	5	10	19
134	(C2) ... spe	0	0	0	0
135	(C3) ... spe	0	0	0	0
136	(D) CHILDF (D1) ... and	0	0	0	0
137	(D2) ... and	0	2	0	2
138	Totals	11	17	21	49

----- Data Output -----									
Students included in report for District									
District Co	Student I	State ID	Student L	Student F	SSN	DOB	Age	Race	Status of S Grade

Indicator 6A Targets

Targets by Determination Year

The target for the 2022-23 determination year will be 40.01% or more.



Indicator 7:

Early Childhood Outcomes



Indicator 7: Early Childhood Outcomes

- Definition—Percent of preschool children aged 3 through 5 with IEPs who demonstrate improved outcomes in each type of outcome.
- Source—Entrance and exit data entered in the Early Childhood Outcomes (ECO) tab in TN PULSE.
- Calculation—Using students from the report who either turned six **OR** exited early childhood services during the year in question:

Children who improved functioning to a level nearer **OR** comparable to same-aged peers (categories c **OR** d) in each outcome.



Total students, excluding those who entered **AND** maintained same-aged peer level functioning (categories a, b, c, & d only).



Calculating Indicator 7 for your LEA

- Run the *ECO Date Report (Ages 3-5) (xls)* in the "Reports" section of TN PULSE.
 - Since this report pulls on the early childhood entry date, enter a date range that encompasses the previous five reporting years (July 1 to June 30). For example, to retrieve data from the 2022-23 school year, enter a "From" date of 7/1/18 and a "To" date of 6/30/23.
- Once the report has been downloaded, filter for exit dates within the applicable reporting year. For example, to view data from the 2022-23 reporting year, filter for exit dates between 7/1/22 and 6/30/23.
- Enter data into the second tab ("Data") of the following [template](#).
- The third tab ("OSEP Progress Category Totals") will calculate the progress category total and percentage for each outcome and the summary statement percentage for each outcome.

Conversion of Child Outcomes Summary Form (COSF) data to OSEP Reporting Categories															
Instructions															
Entry															
Enter child ID in "ID" column.															
Enter date from outcomes summary form in Entry "Date" column (format MM/DD/YYYY)															
Enter rating numbers (1 through 7) for Entry outcomes 1, 2 and 3															
To add a row, press Ctrl + r (press and hold the Ctrl key then tap the r key)															
Exit															
Locate child ID in "ID" column															
Enter date from outcomes summary form in Exit "Date" column (format MM/DD/YYYY) - must be at least 6 months after that for Entry															
Enter rating numbers (1 through 7) for Exit outcomes 1, 2 and 3															
Indicate whether or not progress was made for each outcome since Entry (yes or no, format "y" or "n")															
Reporting categories as shown at right will appear in "OSEP Category" columns															
Totals: click on "OSEP Category Totals" worksheet below to see a running tally of entries															
OSEP Categories Key															
a - Children who did not improve functioning															
b - Children who improved functioning but not sufficient to move nearer to functioning comparable to same age peers															
c - Children who improved functioning to a level nearer to same-aged peers but did not reach it															
d - Children who improved functioning to reach a level comparable to same-aged peers															
e - Children who maintained functioning at a level comparable to same-aged peers															
Progress? - No determination of progress has been provided yet (please fix)															
Impossible - The combination entered could not possibly occur. For example, a child cannot go from a 5 to a 7 and show no progress (please fix)															
ID	Program	Date	Outcome 1	Outcome 2	Outcome 3	Date	Outcome 1	Progress	Outcome 2	Progress	Outcome 3	Progress	Outcome 1 OSEP Category	Outcome 2 OSEP Category	Outcome 3 OSEP Category
9999999	999	12/18/18	5	4	5	08/05/21	6	y	6	y	6	y	d	d	d
9999999	999	12/04/20	3	3	3	03/02/22	4	y	4	y	4	y	c	c	c
9999999	999	02/20/19	2	3	5	03/01/22	5	y	6	y	6	y	c	d	d
9999999	999	04/12/19	4	4	5	03/09/22	5	y	6	y	6	y	c	d	d
9999999	999	09/16/21	6	7	7	10/25/21	6	y	7	y	7	y	e	e	e
9999999	999	04/29/19	3	3	4	03/28/22	6	y	5	y	6	y	d	c	d
9999999	999	10/02/20	3	3	1	09/03/21	3	y	3	y	3	y	b	b	c
9999999	999	08/31/20	1	1	1	03/22/22	4	y	5	y	4	y	c	c	c
9999999	999	02/25/21	3	3	2	04/05/22	4	y	4	y	3	y	c	c	c
9999999	999	03/09/20	4	3	5	08/18/21	4	y	3	y	6	y	b	b	d
9999999	999	11/17/21	3	3	3	12/01/21	3	y	3	y	3	y	b	b	b
9999999	999	08/02/20	3	2	3	01/27/22	4	y	3	y	4	y	c	c	c
9999999	999	01/10/19	3	3	3	08/23/21	7	y	7	y	7	y	d	d	d
9999999	999	03/07/19	3	5	7	08/24/21	4	y	6	y	7	y	c	d	e
9999999	999	09/24/20	2	3	5	09/09/21	3	y	4	y	5	y	c	c	b
9999999	999	04/23/21	7	5	7	11/01/21	7	y	8	y	7	y	e	d	e
9999999	999	07/25/19	4	4	5	09/08/21	5	y	5	y	5	y	c	c	b

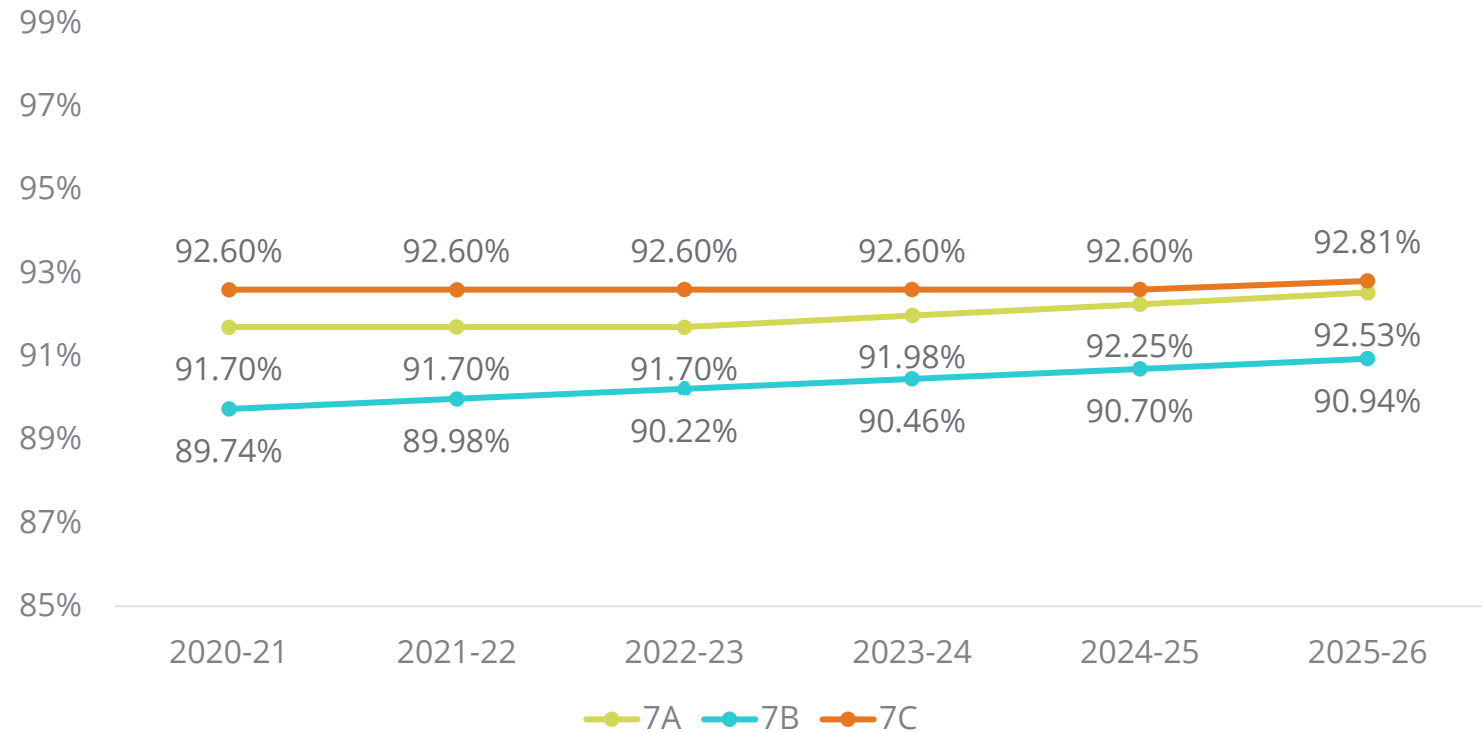
OSEP Progress Category Totals			
<i>Data shown exclude: children with service less than 6 months, those missing entry or exit dates, children with no information about child's progress at exit, and situations where entry and exit data generated impossible progress category combinations.</i>			
Outcome 1	Number	Percentage	
a: Children who did not improve functioning	0	0.0%	
b: Children who improved functioning but not sufficient to move nearer to functioning comparable to same age peers	2	13.3%	
c: Children who improved functioning to a level nearer to same-aged peers but did not reach it	9	60.0%	
d: Children who improved functioning to reach a level comparable to same-aged peers	3	20.0%	
e: Children who maintained functioning at a level comparable to same-aged peers	1	6.7%	
Total	15	100%	
Outcome 2	Number	Percentage	
a: Children who did not improve functioning	0	0%	
b: Children who improved functioning but not sufficient to move nearer to functioning comparable to same age peers	2	13.3%	
c: Children who improved functioning to a level nearer to same-aged peers but did not reach it	7	46.7%	
d: Children who improved functioning to reach a level comparable to same-aged peers	6	40.0%	
e: Children who maintained functioning at a level comparable to same-aged peers	0	0%	
Total	15	100%	
Outcome 3	Number	Percentage	
a: Children who did not improve functioning	0	0%	
b: Children who improved functioning but not sufficient to move nearer to functioning comparable to same age peers	2	13.3%	
c: Children who improved functioning to a level nearer to same-aged peers but did not reach it	5	33.3%	
d: Children who improved functioning to reach a level comparable to same-aged peers	6	40.0%	
e: Children who maintained functioning at a level comparable to same-aged peers	2	13.3%	
Total	15	100%	
SUMMARY STATEMENTS			
1. Of those children who entered the program below age expectations in [outcome], the percent that substantially increased their rate of growth in [outcome] by the time they exited.	85.7%	86.7%	84.6%
2. Percent of children who were functioning within age expectations in [outcome], by the time they exited.	26.7%	40.0%	53.3%

Early Childhood Outcomes Targets

Indicator 7 has three outcomes, each with its own target. The targets for the 2022-23 determination year will be:

- **7A** = social-emotional skills (91.70% or more)
- **7B** = knowledge and skills (90.22% or more)
- **7C** = appropriate behaviors (92.60% or more)

Targets by Determination Year



Indicator 12:

Part C to B Transition



Indicator 12: Part C to B Transition

- Definition—Percent of children referred by Part C prior to age 3, who are found eligible for Part B, and who have an IEP developed and implemented by their third birthdays.
- Source—Students turning three between 7/1 and 6/30 are pulled from the Tennessee Early Intervention Services Data System (TEIDS) on **Sept. 1** and merged with TN PULSE exit and eligibility data.
- Calculation—Using children who have been served in Part C and referred to Part B for Part B eligibility determination:

Number of those found eligible who have an IEP developed and implemented by their third birthday.



Total children referred from Part C to Part B, excluding those who were determined NOT eligible by their third birthday **OR** parent refused evaluation or services **OR** who were determined eligible under Part C less than 90 days before their third birthday.



Calculating Indicator 12 for your LEA

Keep a spreadsheet of all children coming from the Tennessee Early Intervention System (TEIS) who are turning three between July 1 and June 30 of the applicable school year. Transitioning children are placed into one of the following categories:

- a. Number of children who have been served in Part C and referred to Part B for Part B eligibility determination.
- b. Number of those referred determined to be NOT eligible and whose eligibility was determined prior to their third birthdays.
- c. Number of those found eligible who have an IEP developed and implemented by their third birthdays.
- d. Number of children for whom parent refusal to provide consent caused delays in evaluation or initial services or to whom exceptions under 34 C.F.R. § 300.301(d) applied.
- e. Number of children determined to be eligible for early intervention services under Part C less than 90 days before their third birthdays.

Percent compliant for Indicator 12 is calculated using the following formula: [(c) divided by (a - b - d - e)] times 100.

Part C to B Transition Target

- Indicator 12 is a compliance indicator; therefore, the target will always be 100%.
- By the end of September, a TDOE representative will provide you a list of children who did not have an IEP developed and implemented by their third birthday. You will provide additional information so that those children can be correctly categorized as compliant or non-compliant.

LEA Document Library [\[Expand All\]](#) [\[Collapse All\]](#)

- [-] 2023
 - Folders
 - + Alternative Breakfast Grant FY20
 - [-] Annual Performance Report (APR) Local Determinations
 - Folders
 - [-] FFY 2021 (2021-22 SY)
 - Documents
 - + Letter of Local Determination [\[Edit Documents\]](#)
 - + Local Determinations Data Matrix [\[Edit Documents\]](#)
 - + APR Local Determination Acknowledgement Form [\[Edit Documents\]](#)
 - + Specific Indicator Data [\[Edit Documents\]](#)



Contact Information

- Zachary Stone, *Senior Director of Data Reporting*
 - Zachary.Stone@tn.gov
- Adam Rollins, *IDEA Data Manager*
 - Adam.Rollins@tn.gov
- Sheryn Ordway, *TN PULSE Help Desk Coordinator*
 - Sheryn.Ordway@tn.gov

