



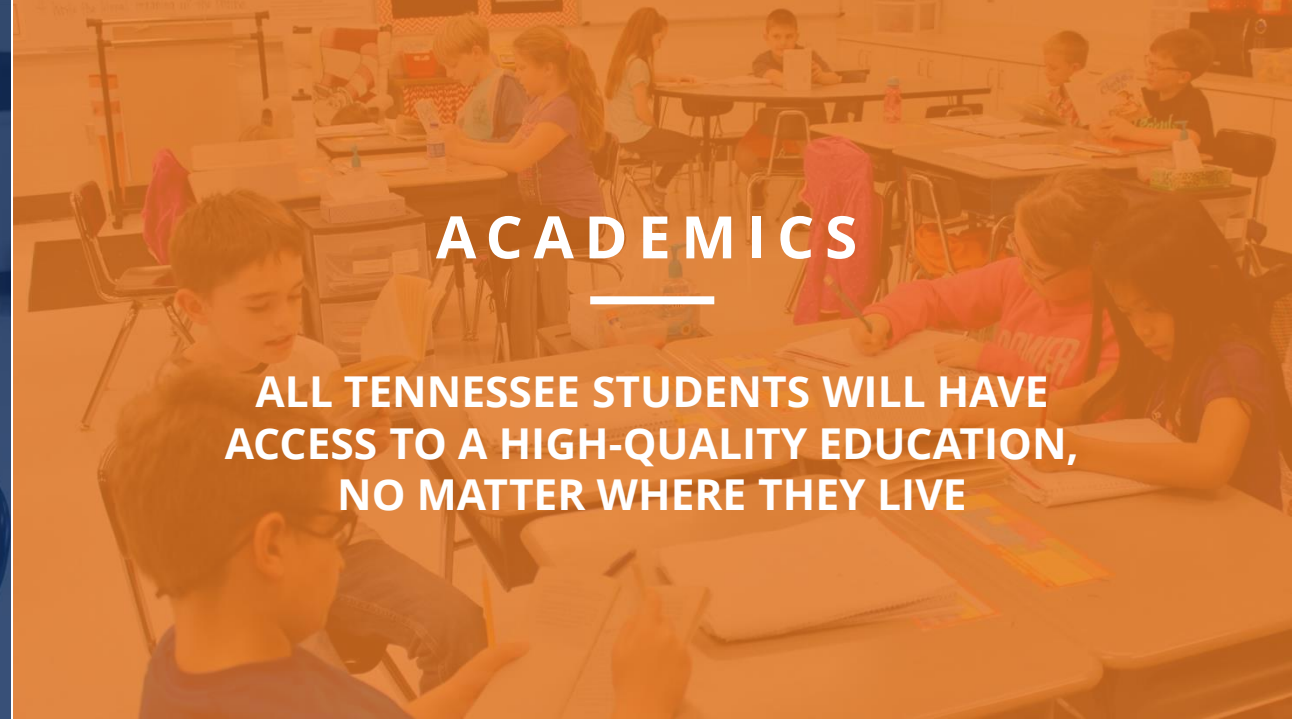
TISA Office Hours

April 23, 2024



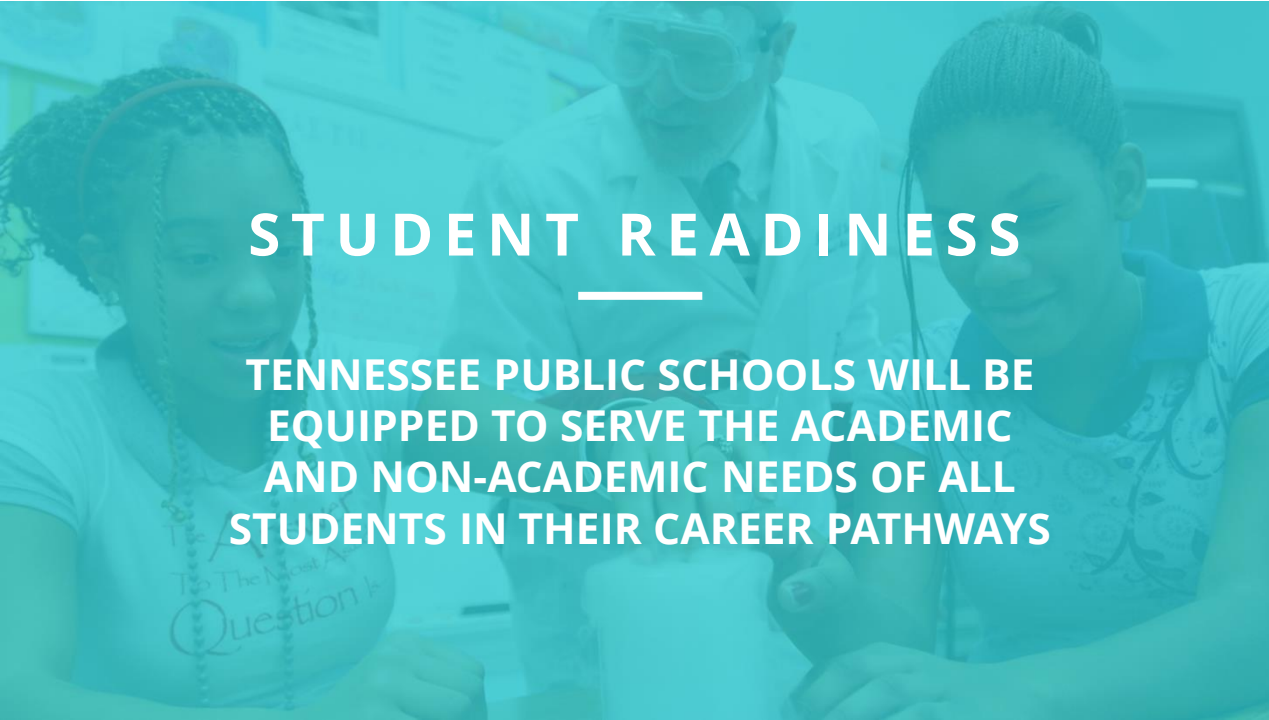
BEST FOR
ALL

We will set all students on a path to success.



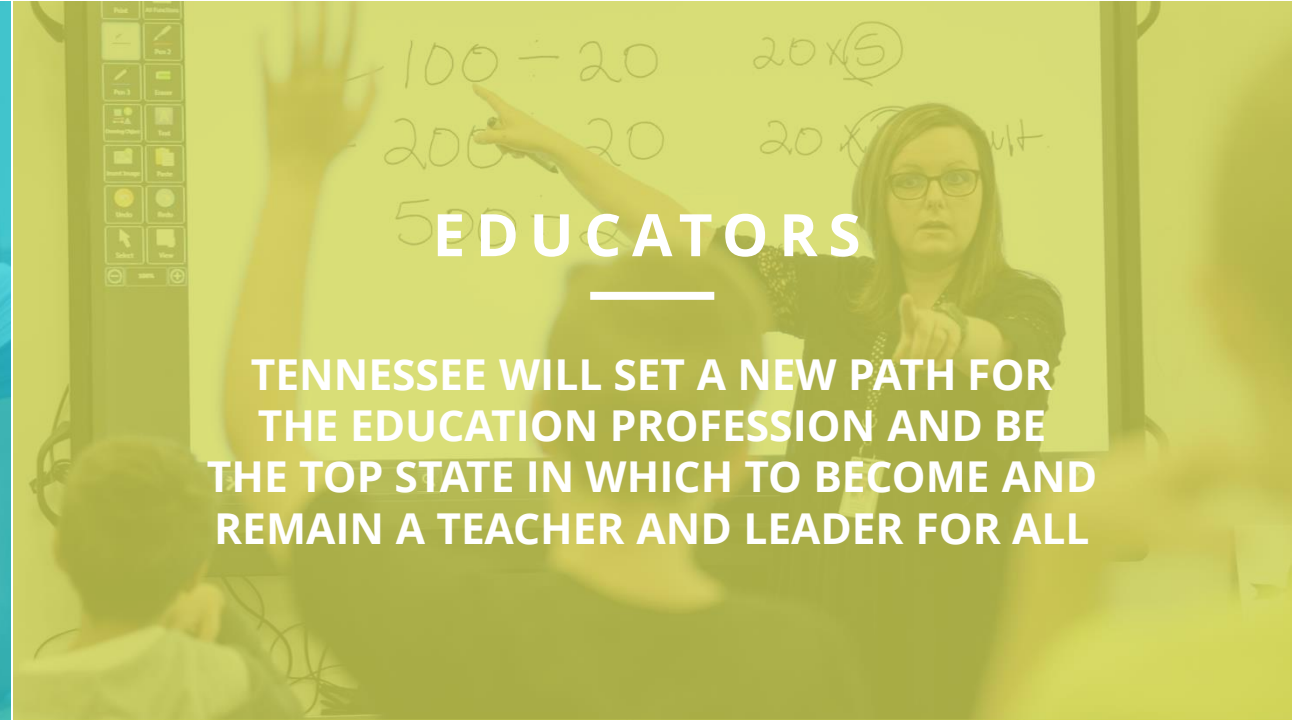
ACADEMICS

ALL TENNESSEE STUDENTS WILL HAVE
ACCESS TO A HIGH-QUALITY EDUCATION,
NO MATTER WHERE THEY LIVE



STUDENT READINESS

TENNESSEE PUBLIC SCHOOLS WILL BE
EQUIPPED TO SERVE THE ACADEMIC
AND NON-ACADEMIC NEEDS OF ALL
STUDENTS IN THEIR CAREER PATHWAYS



EDUCATORS

TENNESSEE WILL SET A NEW PATH FOR
THE EDUCATION PROFESSION AND BE
THE TOP STATE IN WHICH TO BECOME AND
REMAIN A TEACHER AND LEADER FOR ALL

Agenda

- TISA – Data Updates
- Data File Overview
- Verifying Data
- TN PULSE Updates
- Questions



TISA Data Updates



Economically Disadvantaged

- Economically Disadvantaged
 - Definition has not changed
 - Direct certification
 - Homeless
 - Migrant
 - Runaway
 - Foster
 - Students who are **only** Medicaid Free or Medicaid Reduced are not included in the economically disadvantaged count for funding



Economically Disadvantaged

- Economically Disadvantaged
 - ED numbers may be higher than anticipated due to miscoding of Medicaid students
 - ED numbers may be lower than anticipated due to delayed timelines in certification of SNAP and TANF benefits.
 - State will initiate a proactive hold harmless to fund ED ADM values at the higher of 2022-23 or 2023-24 school year
- Hold harmless was reflected in the March estimates recently sent to districts



English Learners

- Funding will be provided to students who
 - Meet the EL Tier 1, EL Tier II or EL Tier III definition as outlined in the TISA rule, **and**
 - Have an individual learning plan (ILP) finalized in TN PULSE.
- For 2024-25 school year funding:
 - Funding will be based on their full ADM generated based on their *enrollment* date
 - If an EL student was enrolled in your district but transferred out prior to an ILP being established in TN PULSE, district will receive credit for the student's ADM value while enrolled in your district



Characteristics of Dyslexia

- Funding will be provided to students who
 - Meet the criteria for Characteristics of Dyslexia as outlined in the TISA rule, **and**
 - Have an ILP-D finalized in TN PULSE.
- For 2024-25 school year funding:
 - Funding will be based on their full ADM generated based on their *enrollment date*



Concentrated Poverty



- Based on ADM of Title I eligible schools
- Title I eligible schools are pulled from the Consolidated Funding Application (CFA), Title I School Eligibility page
- ADM of all schools eligible for Title I services, even if not being served by your district (40% or higher poverty)
- May change from year to year, resulting in a fluctuation of funding
- Touch base with Title I team to ensure they are aware of the impact on funding

Data File Overview & Data Verification Guidance



Data Verification Guidance



For each TISA component, we recommend two levels of data checks:

1. Verify that data reported in your SIS/ TN PULSE and data in EIS are aligned.
2. Verify that data in EIS and in the TDOE provided monthly TISA files are aligned.

Recommended Reports



Base ADM: Data Reports> Standard Reports > Director's Membership Attendance- By Period Report

ED ADM: Data Reports>Research Queries>Student Classifications Report

Concentrated Poverty: ePlan>Consolidated Funding Application> School Eligibility Page

Special Education ADM:

- EIS: Data Reports>Standard Reports>Special Ed Option- By Period
- Note: Includes Pre-K (TISA does not)

CTE ADM: Data Reports> Standard Reports > Vocational FTE/ADM by Period, Course Code lists

Discrepancies

- **Was data entered after the last TISA pull?**
- **Does the student have multiple rows in the TISA file?**
 - Some changes in student characteristics or schedules can lead to additional rows created for students in the TISA reports.
 - Make sure you are adding the ADM values for each row to get to the student's total ADM.
- **Do your students have full schedules?**
 - If scheduled minutes do not equal student standard day duration, full ADM will not be generated.
- If you identify specific SSIDs that you believe should be included in TISA funding but are missing from your district file, send explanation and examples to tnedu.funding@tn.gov so we can investigate.



TN PULSE Updates



TN PULSE



- Specific users with the *System Administration* role (PG1) within TN PULSE can pull various reports and view SIS import summaries.
- All users can use the *Advanced Student Query* to identify eligible students with active plans.
 - Search up to 1000 students
- ILPs for English learners
 - Follow the process required by Federal/State statutes
 - Home Language Survey - ELPA Screener – Notification letter – ILP
 - The HLS tile (1) generates the ILP Referral event in the student history
 - The notification letter created in tile 2 generates the ILP Eligibility event in the student history (New, Returning, T1/T2)
- ILP-D (Characteristics of dyslexia)
 - DYS2 and DYS3 are required by TN Dyslexia Law
 - No connection to TISA funding

TN PULSE

- LEAs must ensure the enrollment dates (entrance/exit) match in EIS and TN PULSE. This leads to more accurate reporting.
- LEAs are responsible for reconciling data and correcting errors to ensure what's in TN PULSE aligns with their SIS/EIS.
- LEAs should develop a process to ensure all district leads are included in data reconciliation (i.e., special education supervisor, ESL coordinator, Title III director, and RTI² district lead.)



Contact Information

- **Caryn Burkholder**, Director of Operational Data Strategy
 - Caryn.Burkholder@tn.gov
- **Maryanne Durski**, CFO
 - Maryanne.Durski@tn.gov
- **Jennifer Jordan**, Assistant Commissioner of Special Education and Student Supports
 - Jennifer.Jordan@tn.gov
- **Funding and TISA Data questions**
 - Tnedu.funding@tn.gov



Questions

