

20 | **ON TRACK**
24 | *with Federal Programs*

Federal Programs Institute

SEPTEMBER 10-12 • Chattanooga Convention Center



Engineered for Success: Developing & Tracking ESL Program Effectiveness

Raven Cleveland

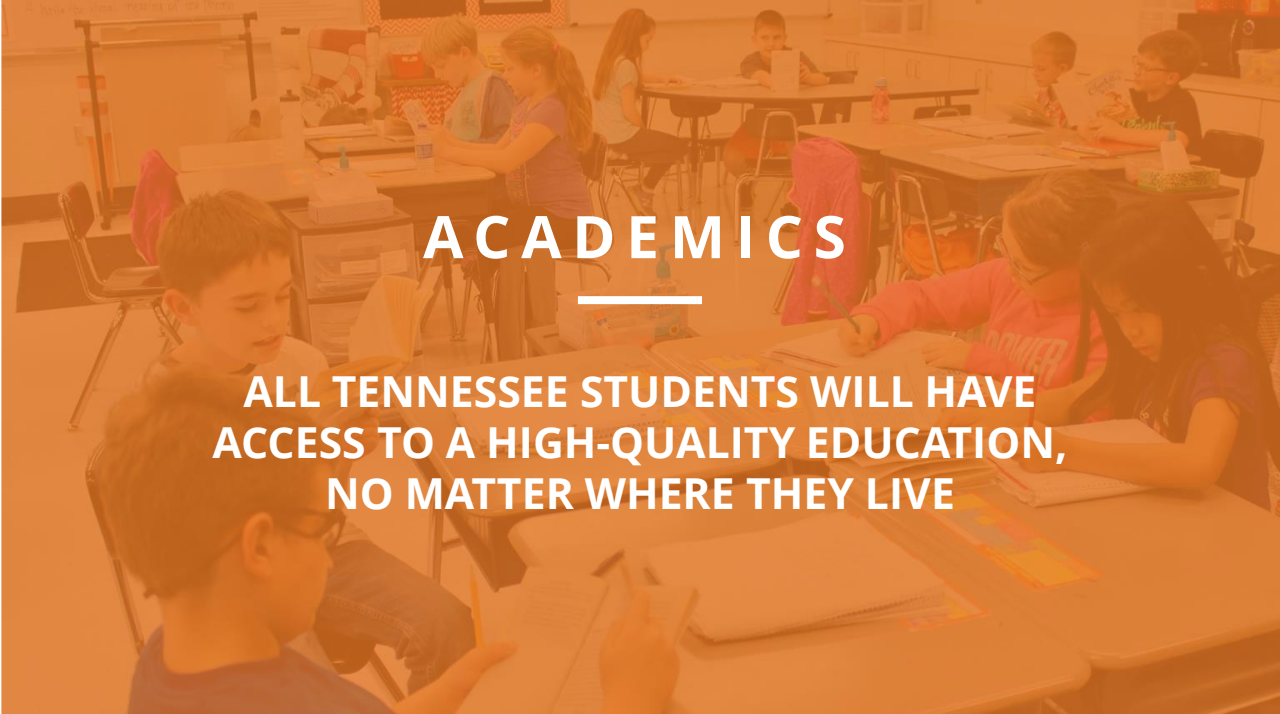
Sr Coordinator of English Learners | Office of Academics





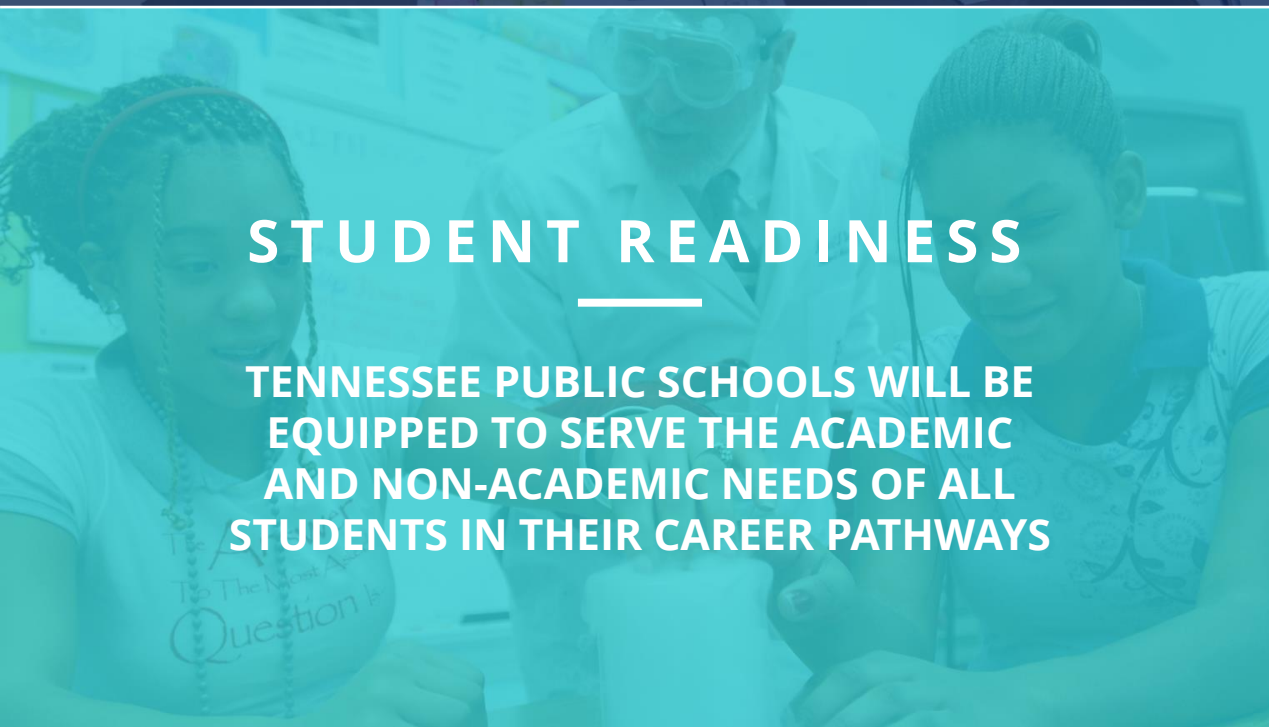
BEST FOR ALL

We will set all students on a path to success.



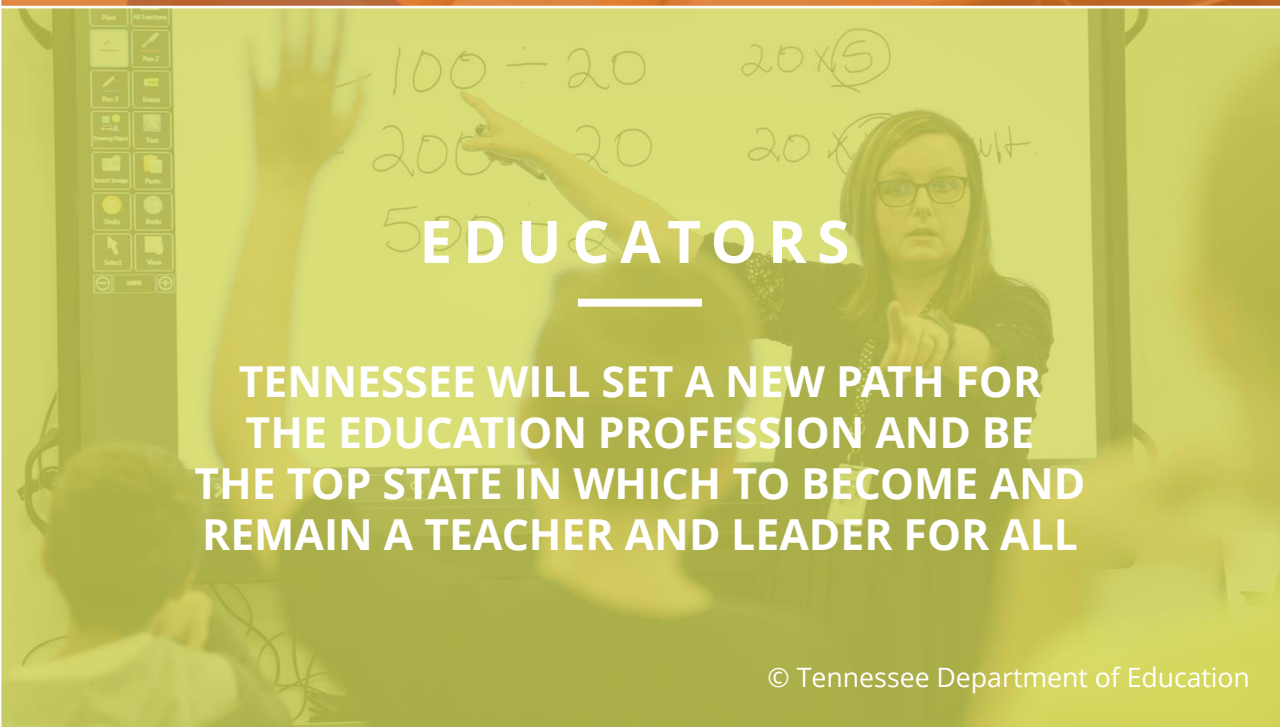
ACADEMICS

ALL TENNESSEE STUDENTS WILL HAVE ACCESS TO A HIGH-QUALITY EDUCATION, NO MATTER WHERE THEY LIVE



STUDENT READINESS

TENNESSEE PUBLIC SCHOOLS WILL BE EQUIPPED TO SERVE THE ACADEMIC AND NON-ACADEMIC NEEDS OF ALL STUDENTS IN THEIR CAREER PATHWAYS



EDUCATORS

TENNESSEE WILL SET A NEW PATH FOR THE EDUCATION PROFESSION AND BE THE TOP STATE IN WHICH TO BECOME AND REMAIN A TEACHER AND LEADER FOR ALL



- Foundations for ESL Program Evaluation
- ESL Program Models
- ESL Program Evaluation
- Q&A Session



Foundations for ESL Program Evaluation

Castañeda v. Pickard (1981)

- 3 Prong Standard for ESL Programs
 - Based on sound educational theory
 - Implemented effectively with sufficient resources and staff
 - Evaluated to determine whether programs are effective in helping students overcome language barriers



ESL Rule 0520-01-19

- Based on sound educational theory
- Implemented effectively with sufficient resources and staff
- Evaluated to determine whether programs are effective in helping students overcome language barriers

ESL Program Models

Delivery Models

Pull - Out

An ESL teacher delivers intensive language support to EL students in small groups or one-on-one settings outside of the general education classroom using an approved Direct ESL Service model

Scheduled ELD Course

An ESL teacher delivers intensive language instruction to English Learners during a scheduled instructional period using an approved Direct ESL Service model.

Co Teaching

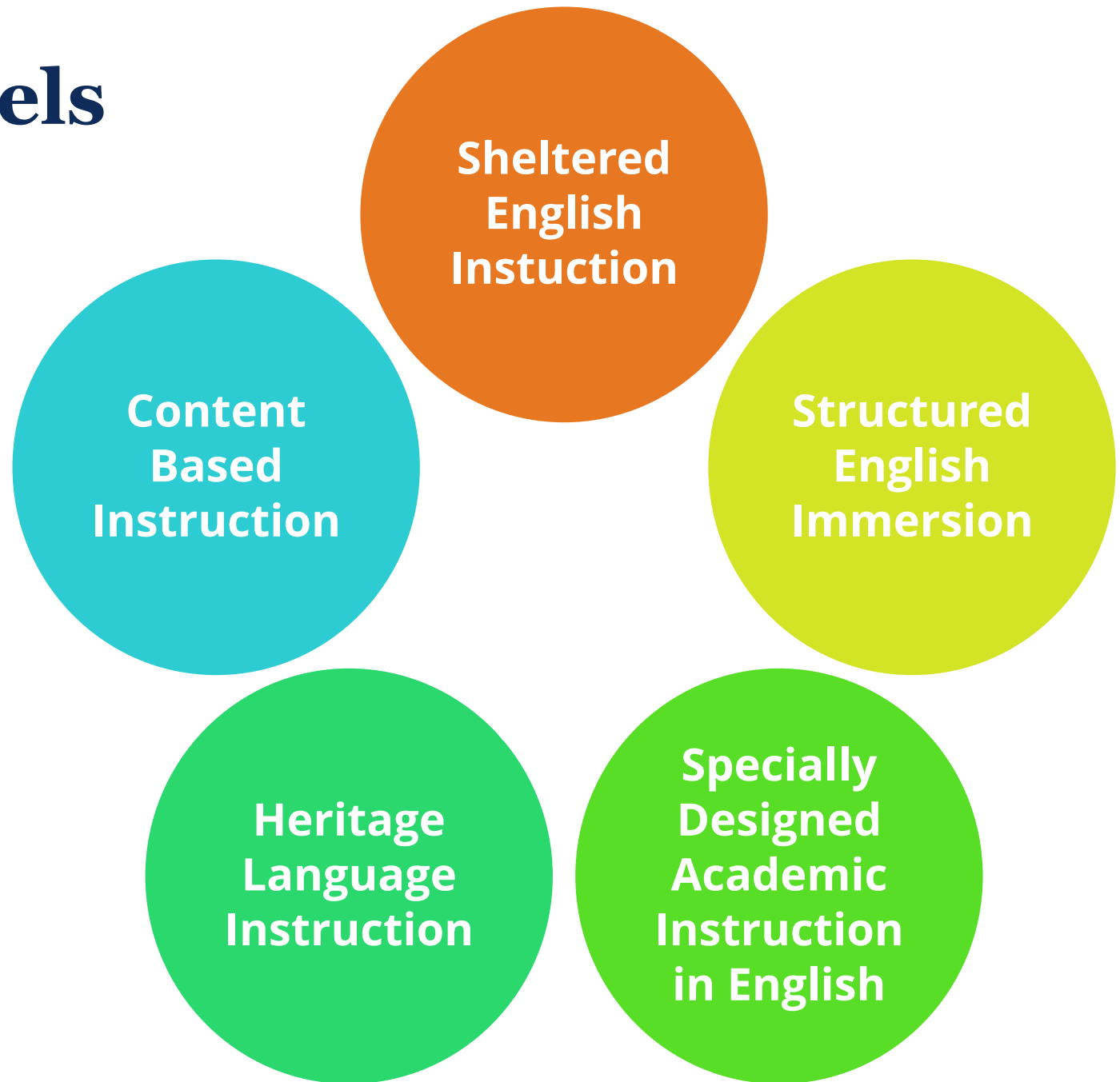
The collaborative planning, organization, delivery, and assessment of instruction by a general education teacher and a teacher who holds an ESL endorsement that integrates content and language standards using an approved Direct ESL Service model

Virtual

In virtual schools and settings, an ESL teacher delivers intensive language instruction virtually to English Learners during a scheduled instructional period using an approved Direct ESL Service model.

ESL Service Models

- Second Language Acquisition Principles
- Evidence-based research of effectiveness
- Common scaffolds and supports



Another Model Approved by the Department

- Evidence-based and effective
- Provide effective Language Instruction Education Programs that meet the needs of ELs and demonstrate success in increasing ELP and student academic achievement
- Be aligned with the Tennessee ELD standards
- Requests for another model must be approved **before** an LEA uses that other model.





Program Model Considerations

Conduct a needs analysis for:

- Who?
 - Number of English Learners
 - Level of Proficiencies
 - Number of Staff
 - Number of Languages

- What?
 - Language Focused
 - Content Driven



ESL Program Evaluation

LEA Evaluation Plan

English Learner
Data

ESL Staff &
Training

ESL Academics &
Instruction

ESL Program
Considerations

English Learner
Family &
Community
Engagement



English Learner Data

- ELPA Data (WIDA, ELPA21, Screener)
 - Program Exit
 - Program Growth
- Transition Data
- TCAP & Other Assessment Data
- Universal Screener Data
- Benchmark & Other Progress Monitoring Data
- Demographic Data
- Graduation Rates
- Anecdotal & Interview Data



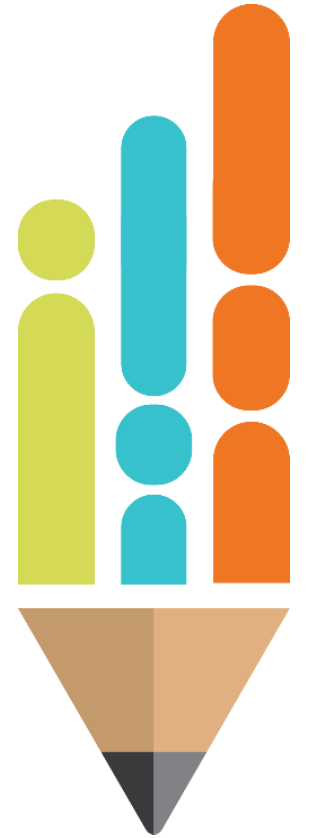
ESL Staff & Training

- Teacher Certification
- Teacher Ratio (1:35 or less)
- Teacher Recruitment & Retention
- Teacher Assignment
- Educator Professional Learning



ESL Academics & Instruction

- ELPA21 Standards Framework
- Best Practices in ESL Instruction
- Curriculum Considerations
- Progress Monitoring
- Goal Setting



ESL Program Considerations

- Service Time Coordination
 - Dually identified students
 - Students in intervention
 - Other Master Scheduling considerations
- Alternative Programs
- Age Appropriate Placement
- Foreign Transcript Evaluation



English Learner Family & Community Engagement

- Family communication
- School climate and culture
- Family and community engagement activities





Evaluation Next Steps

Conduct a process evaluation for:

- Review your on-going needs assessment
- Identifying issues and challenges with current models
- Reflect on year end results of a program
 - Student growth
 - Overall performance



Additional Evaluation Measures

- TELLSA
- ePlan
- TN PULSE ILPs
- Consolidated Funding Application





2024 Federal Programs Institute:
ON TRACK *with Federal Programs*

Thank You!

Raven Cleveland, Senior Coordinator of English Learners
Division of Special Education and Student Supports

Raven.Cleveland@tn.gov

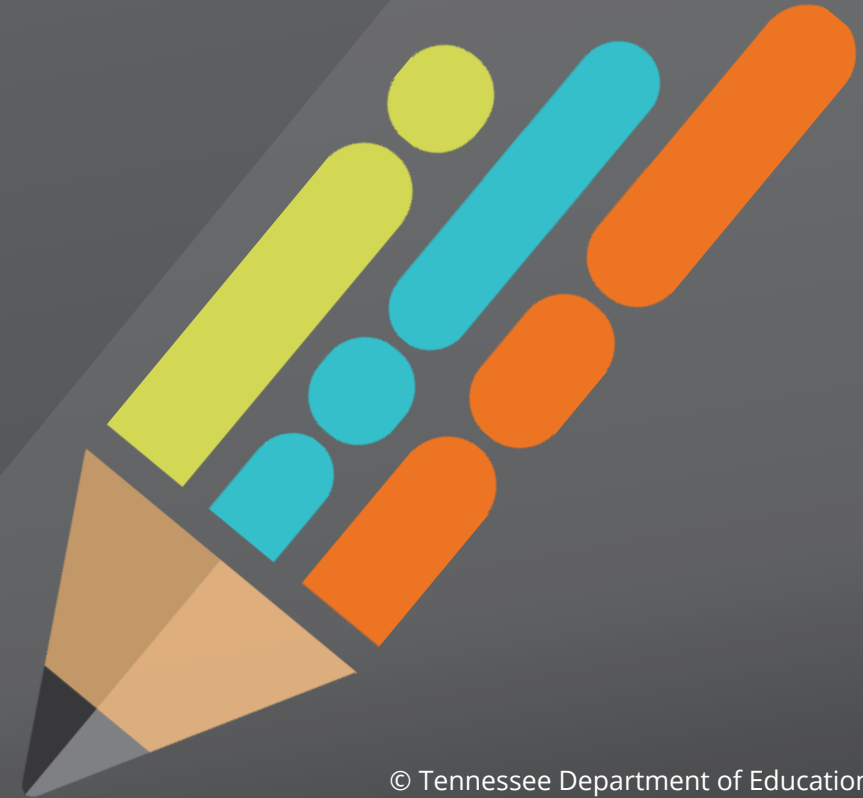
Permission is granted to use and copy these materials for non-commercial educational purposes with attribution credit to the "Tennessee Department of Education". If you wish to use these materials for reasons other than non-commercial educational purposes, please contact the Office of General Counsel at (615) 741-2921 or Joanna Collins (Joanna.Collins@tn.gov).



Please Share your Feedback:

You may access the survey by navigating here:

https://stateoftennessee.formstack.com/forms/2024_federal_programs_institute_presentation_survey



Fraud, Waste or Abuse

Citizens and agencies are encouraged to report fraud, waste, or abuse in State and Local government.

NOTICE: This agency is a recipient of taxpayer funding. If you observe an agency director or employee engaging in any activity which you consider to be illegal, improper or wasteful, please call the state Comptroller's toll-free Hotline:

1-800-232-5454

Notifications can also be submitted electronically at:

<http://www.comptroller.tn.gov/hotline>